



Fishing Regulations in Yosemite National Park

General Fishing Regulations Fishing regulations in Yosemite National Park follow those set by the State of California. Yosemite National Park lies in the State of California's Sierra District. As such any person 16 years of age or older fishing in Yosemite National Park must possess a valid California sport fishing license. This regulation includes anybody over the age of 16 accompanying an individual under the age of 16 who is fishing. While fishing, the license must be attached to an outer layer of clothing above the waistline and be clearly visible.

- Lakes and reservoirs are open to fishing all year.
- Rivers and streams are open to fishing from the last Saturday in April through Nov. 15th.
- Bag limits on lakes, streams and rivers are as follows:
 - ◆ Daily bag limit (stringer limit) – five trout any species with brook trout greater than 10 inches.
 - ◆ Daily possession limit – ten trout any species with brook trout greater than 10 inches.
 - ◆ Bonus brook trout bag and possession limit in the Sierra district south of Interstate 80 – ten brook trout less than 10 inches in total length in addition to the above limits.

These regulations apply to all Yosemite lakes, streams and rivers except those listed below in the special regulations section.

Special Fishing Regulations Special fishing regulations are enforced on the Tuolumne and Merced Rivers and Frog Creek to protect Yosemite National Park's native Rainbow trout populations. See the sections below (and on reverse) for these regulations.

Merced River The Merced River has three special regulation sections. These are listed below. The waters of the Merced River above the Happy Isle footbridge follow the general California fishing regulations.

From the Happy Isles footbridge downstream to the western boundary of the Park.

- Open to fishing from the last Saturday in April to November 15.
- Only artificial lures with single barbless hooks may be used.
- Daily bag limit – zero (0) rainbow trout, five (5) brown trout per day.
- Possession bag limit – zero rainbow trout, ten (10) brown trout in possession.

From the western Park boundary downstream to the Foresta Bridge.

- Open to fishing all year.
- Only artificial lures with single barbless hooks may be used.
- Daily bag limit – zero (0) rainbow trout, five (5) brown trout per day.
- Possession bag limit – zero rainbow trout, ten (10) brown trout in possession.

From the Foresta Bridge down stream to Lake McClure. From the Last Saturday in April to November 15. Special note: this area is outside the boundaries of Yosemite National Park.

- Daily bag limit – five (5) rainbow or brown trout per day.
- Possession bag limit – ten (10) rainbow or brown trout in possession.

From the Foresta Bridge down stream to Lake McClure. From November 16 through the Friday preceding the last Saturday in April.

- Daily bag limit – two (2) rainbow or brown trout per day.
- Possession bag limit – two (2) rainbow or brown trout in possession.

Tuolumne River The Tuolumne River has one special regulation section. This is listed below. The waters of the Tuolumne River above the Hetch Hetchy Reservoir follow the general California fishing regulations.

From the O'Shaughnessy Dam downstream to Early Intake Diversion Dam. From the last Saturday in April to November 15.

- Maximum size limit of 12 inches total length.
- Only artificial lures with barbless hooks may be used.
- Daily bag limit – two (2) trout per day.
- Possession bag limit – two (2) trout in possession.

From the O'Shaughnessy Dam downstream to Early Intake Diversion Dam. From November 16 through the Friday preceding the last Saturday in April.

- Only artificial lures with single barbless hooks may be used.
- Daily bag limit – Zero (0) trout per day.
- Possession bag limit – Zero (0) trout in possession.

Frog Creek

Frog Creek and the mouth of Frog Creek are closed to all fishing activities from Nov. 15th through June 14th. The closure will extend up Frog Creek for ½ mile to the first waterfall, including the pool below the waterfall. The closure will extend 200 ft. from the mouth of Frog Creek out onto Lake Eleanor and along its shore for 200 ft. from the creek's mouth.

Mirror Lake

Mirror Lake in Yosemite Valley is ecologically considered a stream and therefore adheres to the California regulations for Sierra rivers and streams.

- It is open to fishing from the last Saturday in April to November 15.
 - It has a daily bag limit of five (5) trout per day.
 - It has a possession bag limit of ten (10) trout in possession.
-

Fishing From Piers and Bridges

Fishing from piers and bridges in Yosemite National Park is prohibited by order of the Superintendent.

The Use of Live Bait

In order to halt the introduction of nonnative species into Yosemite National Park the use of live bait and unpreserved fish eggs and roe is prohibited in all Park waters.

Common Trout of Yosemite National Park

Yellowish lines on a green background

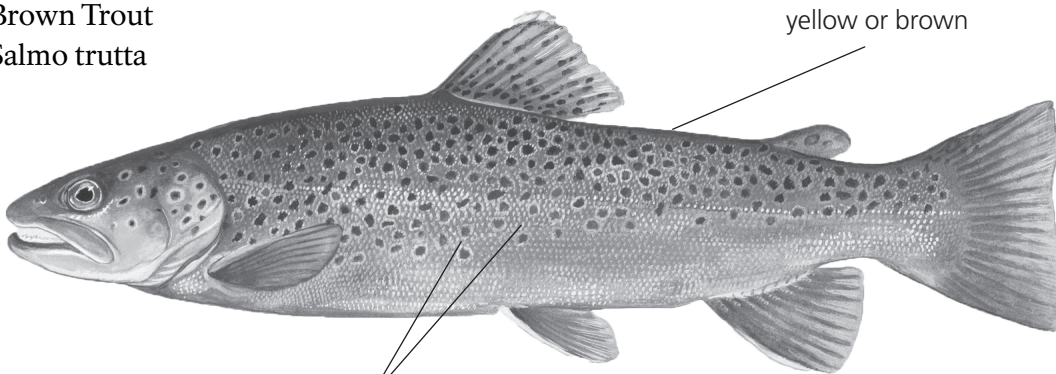
Brook Trout
Salvelinus fontinalis



White and black leading edges to ventral fins

Brown Trout
Salmo trutta

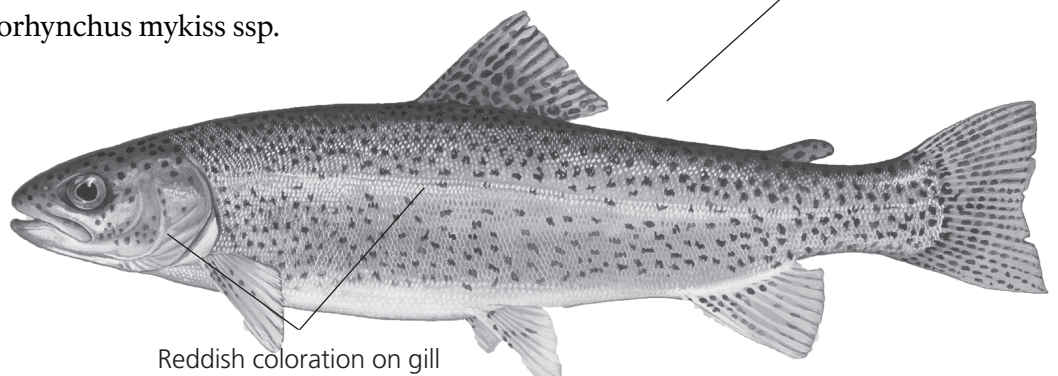
Background color is yellow or brown



Red spots in a light halo

Rainbow Trout
Oncorhynchus mykiss ssp.

Dark spots on a silvery background



Reddish coloration on gill covers and along lateral line